

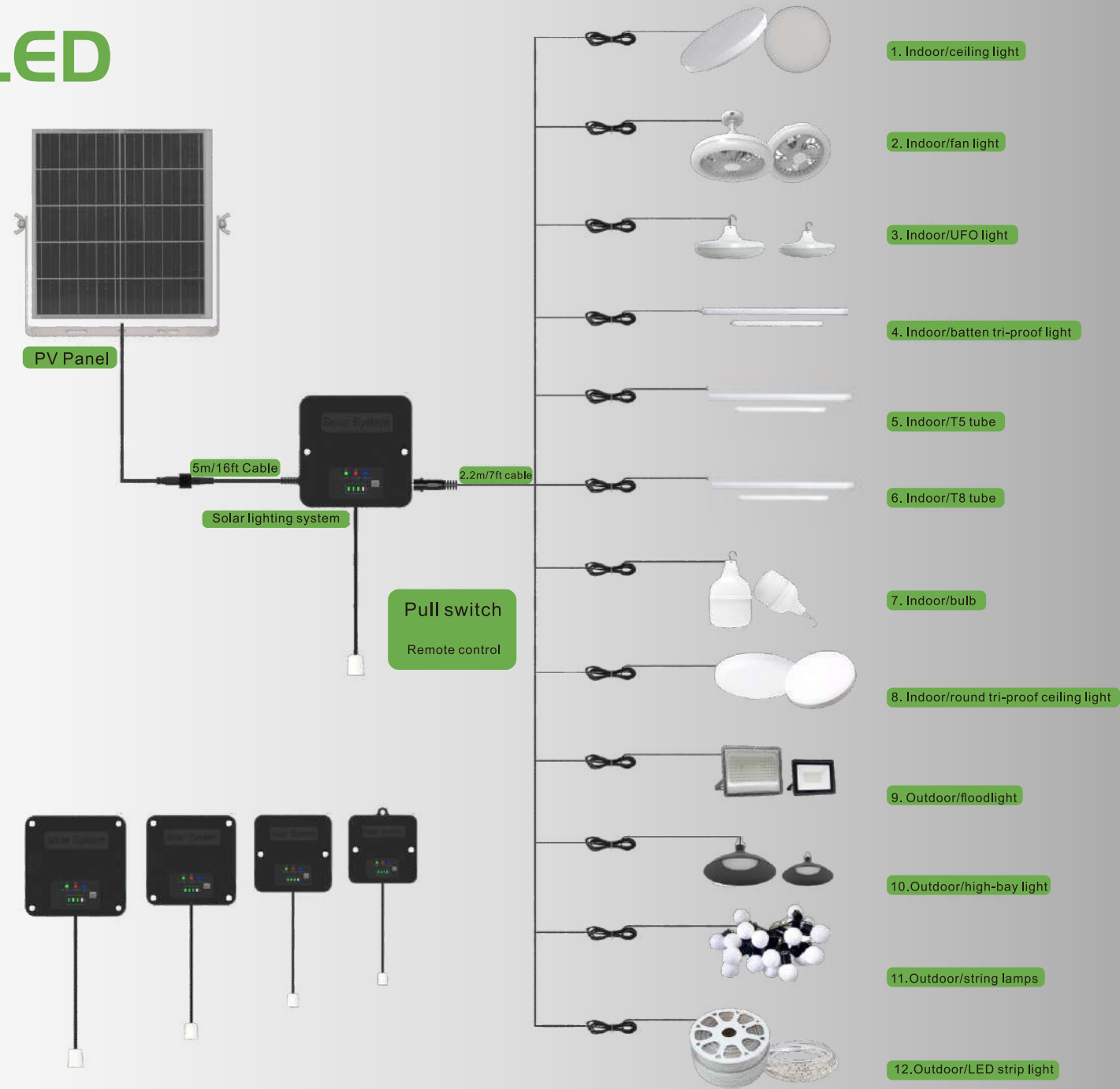
Product Introduction

Success begins with choice.

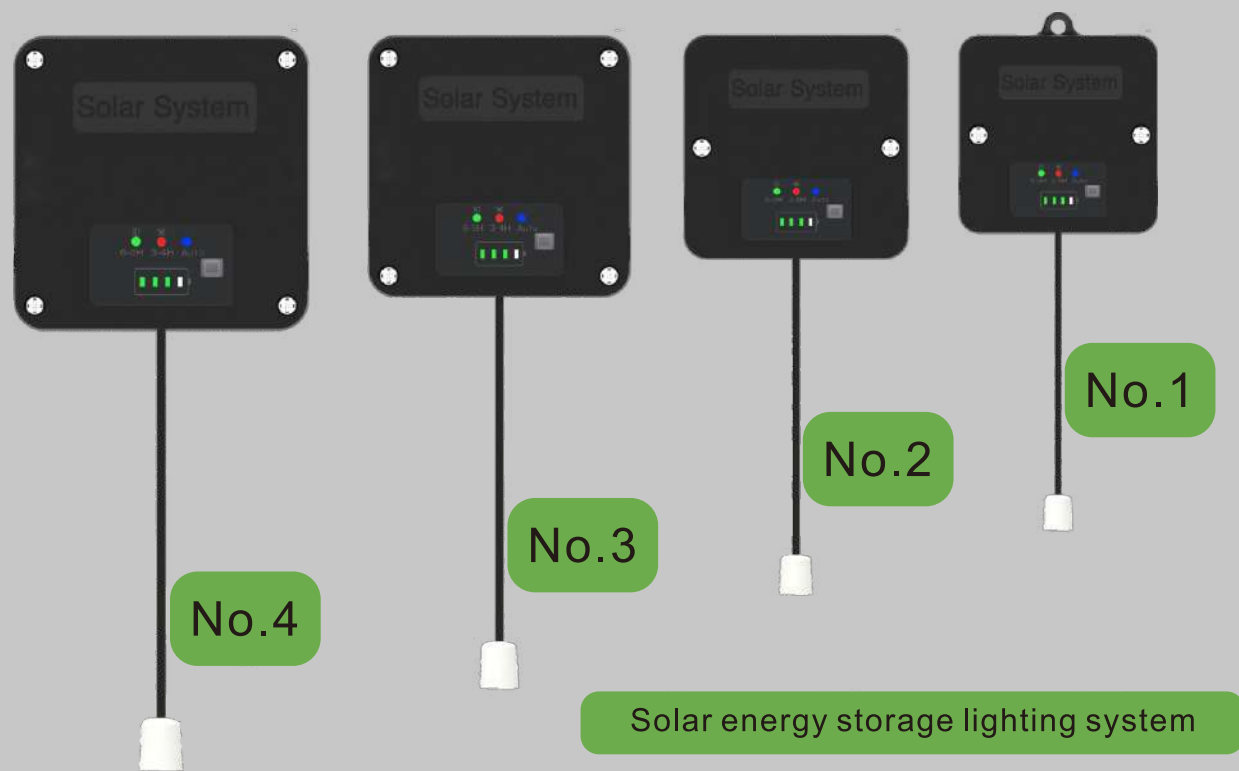
**Solar Lighting System
V1.0**



Application



Contents



01 Product Overview and Advantage

02 Product appearance and structure

03 Product installation and package dimensions

Part.1

Product Overview and Advantage

The solar energy storage system is an energy storage device that can accommodate various lighting products, allowing for easy control of switches and convenient installation.

The entire system features environmental friendliness, energy efficiency, safety, convenience, and long lifespan, with multiple lighting modes available.



Top 10 Advantages

1

Brand new battery fitted

Utilizing the new CE/3C approved 3.7V #21700 battery with PCT.CID safety mechanism. There is no risk of explosion, and it offers a longer cycle life with guaranteed reliability. It can be used normally at temperatures up to -20 C degree.

2

Any combination

The whole series of products can use the universal 5521 DC terminal interface for any combination!

3

Long lighting time

All products in the series have boosted DC12V output and constant output current to accurately control the lighting duration!



Top 10 Advantages

4

Free control

The industry's first creation! Cable switch control, optional remote control, minimalist operation, fully in line with user habits!

5

Multi-channel sales

Solar lighting outdoor channels + traditional indoor channels + online sales channels

6

Use in multiple scenarios

The product can be used in three lighting modes: high brightness, low brightness, and automatic to meet different scenarios and personal preferences.

Top 10 Advantages

7

ready to ship

Product design can be modularized and stocked for production and sales! Fast delivery! Guaranteed delivery of 2 containers within 10 days!

8

Easy to install

The product is equipped with a 7 meter cable length (5m+2m) and optional extension cables and branch cables to meet the installation needs of different scenarios!



9

Mains charging

The product can be equipped with an optional USB charging cable, which can complement the mains power.

10

Long product storage time

The new battery is combined with self-developed software and overcharge and over-discharge protection. The entire product is designed to have low standby current and longer storage time in the warehouse!

Part.2

Product appearance
and structure



Exterior appearance



Exterior appearance

Lighting Mode Instruction

With the lights OFF (pull switch):

Pull it once to turn on the light (low light)

Pull twice fast (highlight)

Pull three times fast (AUTO)

Pull four times fast (turn OFF the light)

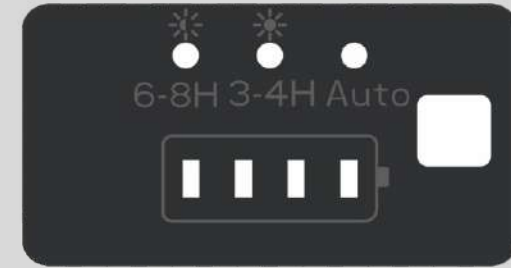
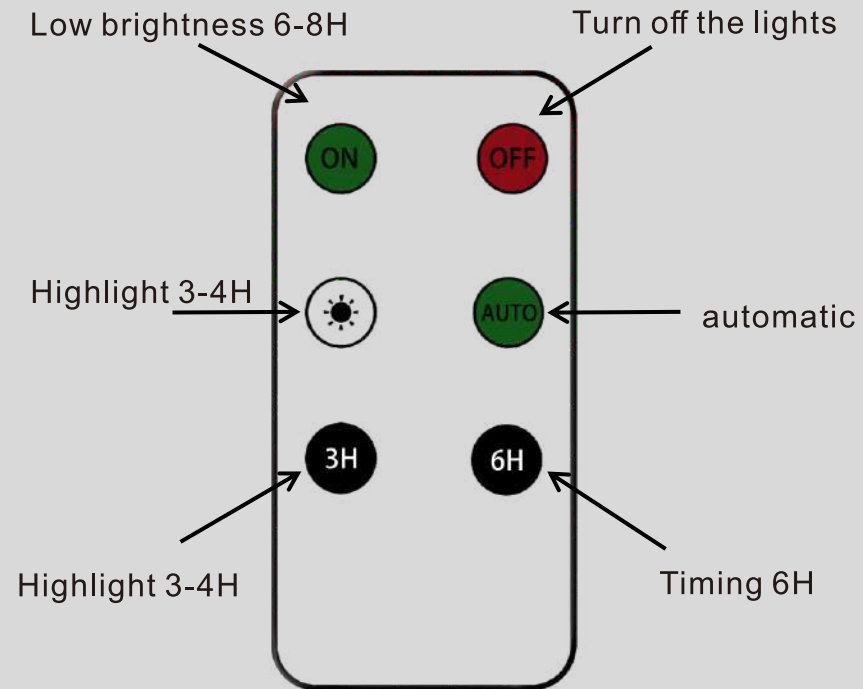
After staying in any mode for over 2 seconds, the light can be turned OFF by pulling once.



The pull switch is divided into low brightness (lasts 6-8 hours), high brightness (lasts 3-4 hours) and automatic mode (automatically off during the daytime and on at night)

Lighting Mode Instruction

Remote Control (option):

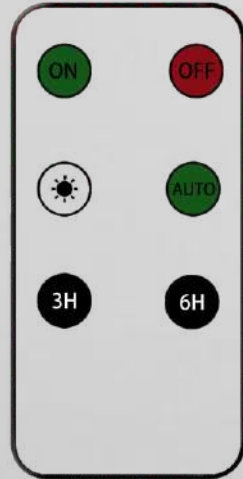


The pull switch is divided into low brightness (lasts 6-8 hours), high brightness (lasts 3-4 hours) and automatic mode (automatically off during the daytime and on at night)

① Remote control

② Various kinds of lights

Optional accessories:



③ USB charging cable



④ Extension cord for PV panel



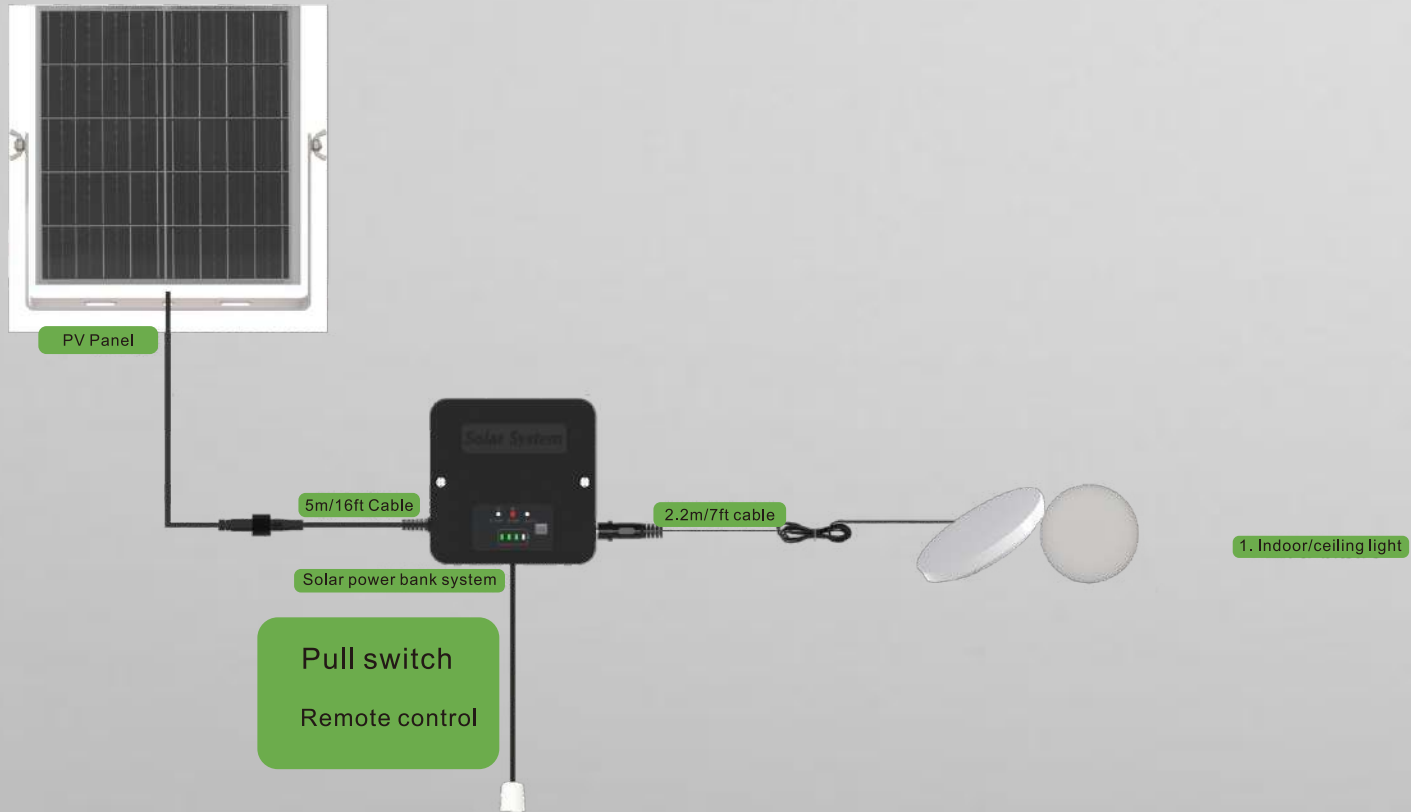
⑤ Extension cord for lights



⑥ bifurcated connecting wire



GIRASOLED



GIRASOLED



PV Panel



5m/16ft Cable

Solar power bank system

- Pull switch
- Remote control

2.2m/7ft cable



2. Indoor/fan light



GIRASOLED



PV Panel

5m/16ft Cable



Solar power bank system

Pull switch

Remote control

2.2m/7ft cable



3. Indoor/UFO light



GIRASOLED



PV Panel



Solar power bank system

Pull switch
Remote control

5m/16ft Cable

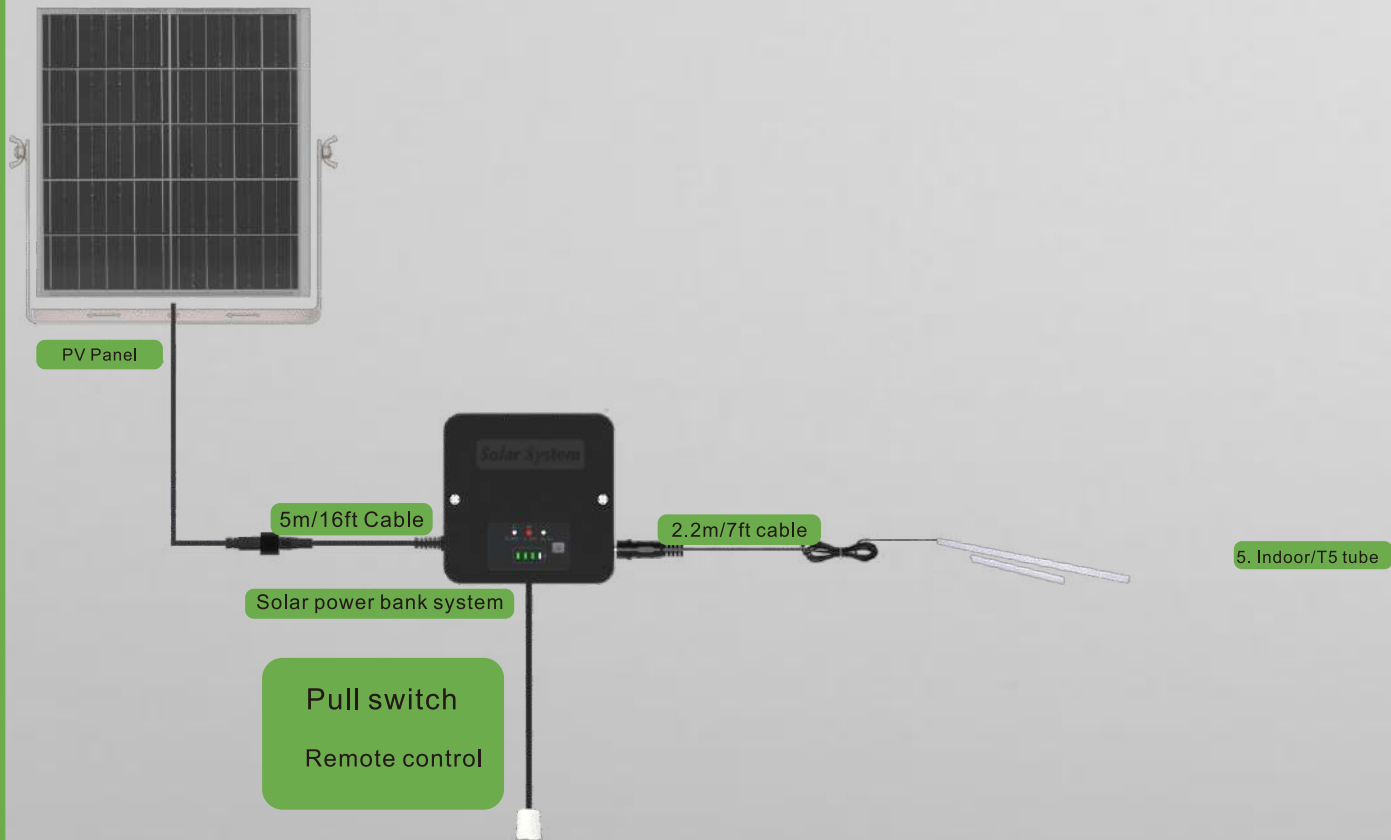
2.2m/7ft cable



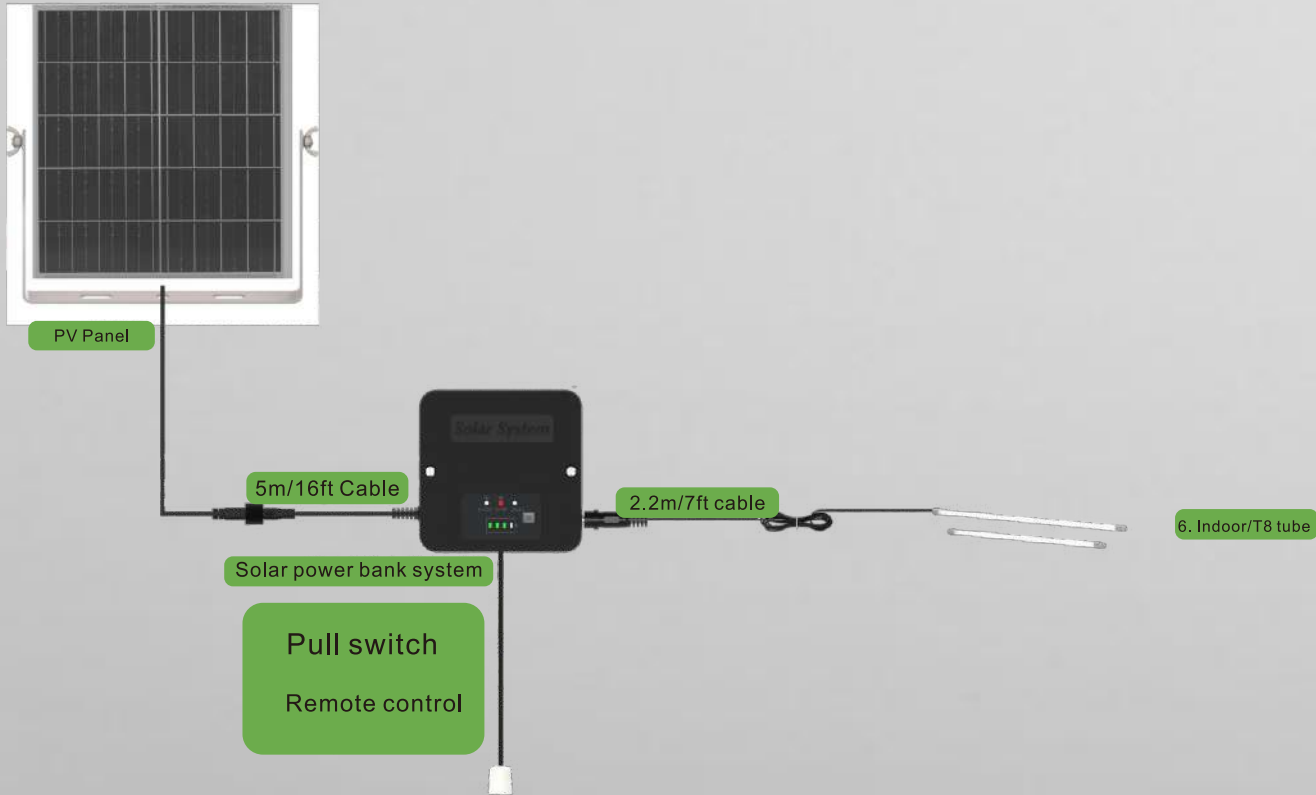
4. Indoor/batten tri-proof light



GIRASOLED



GIRASOLED



GIRASOLED



PV Panel

5m/16ft Cable



Solar power bank system

2.2m/7ft cable



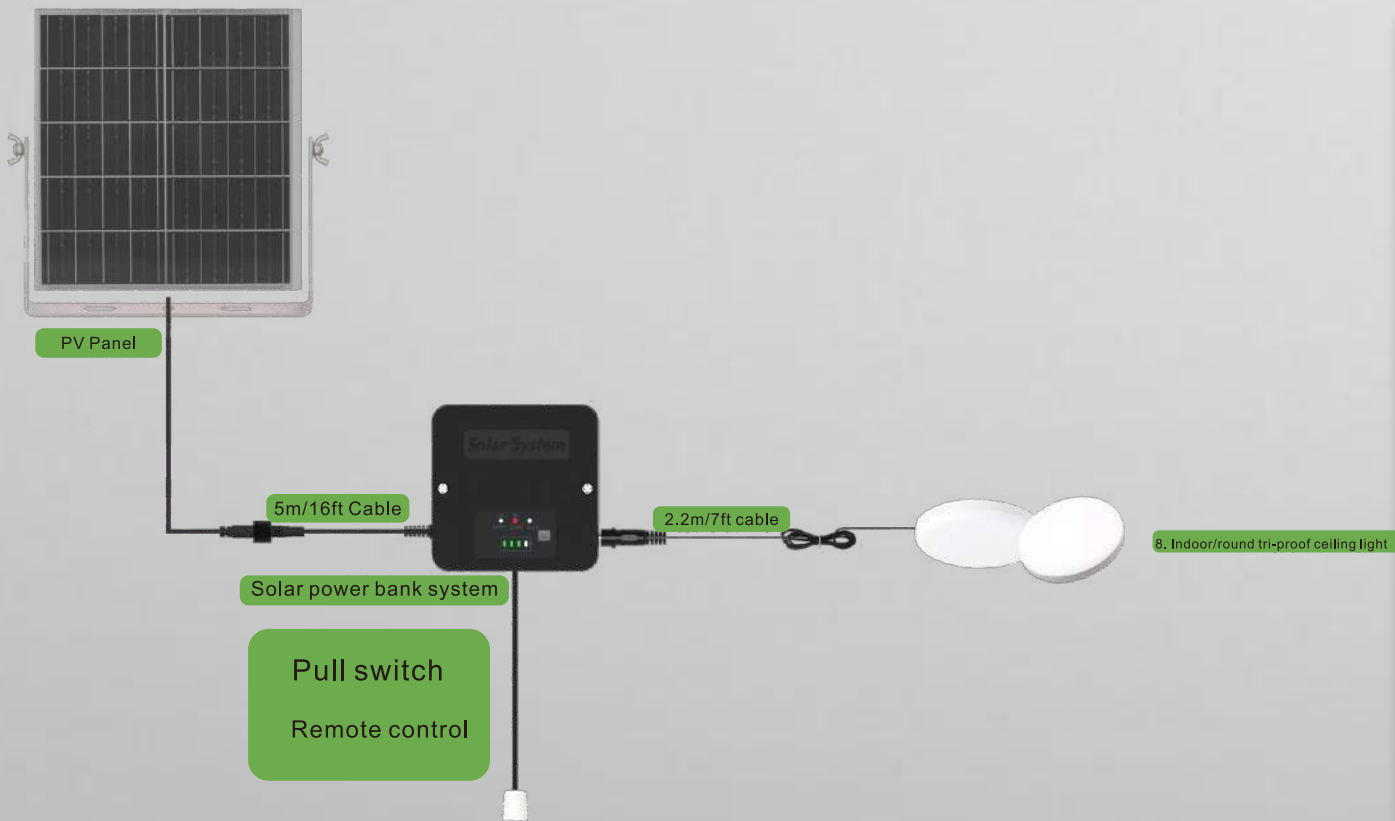
7. Indoor/bulb

Pull switch

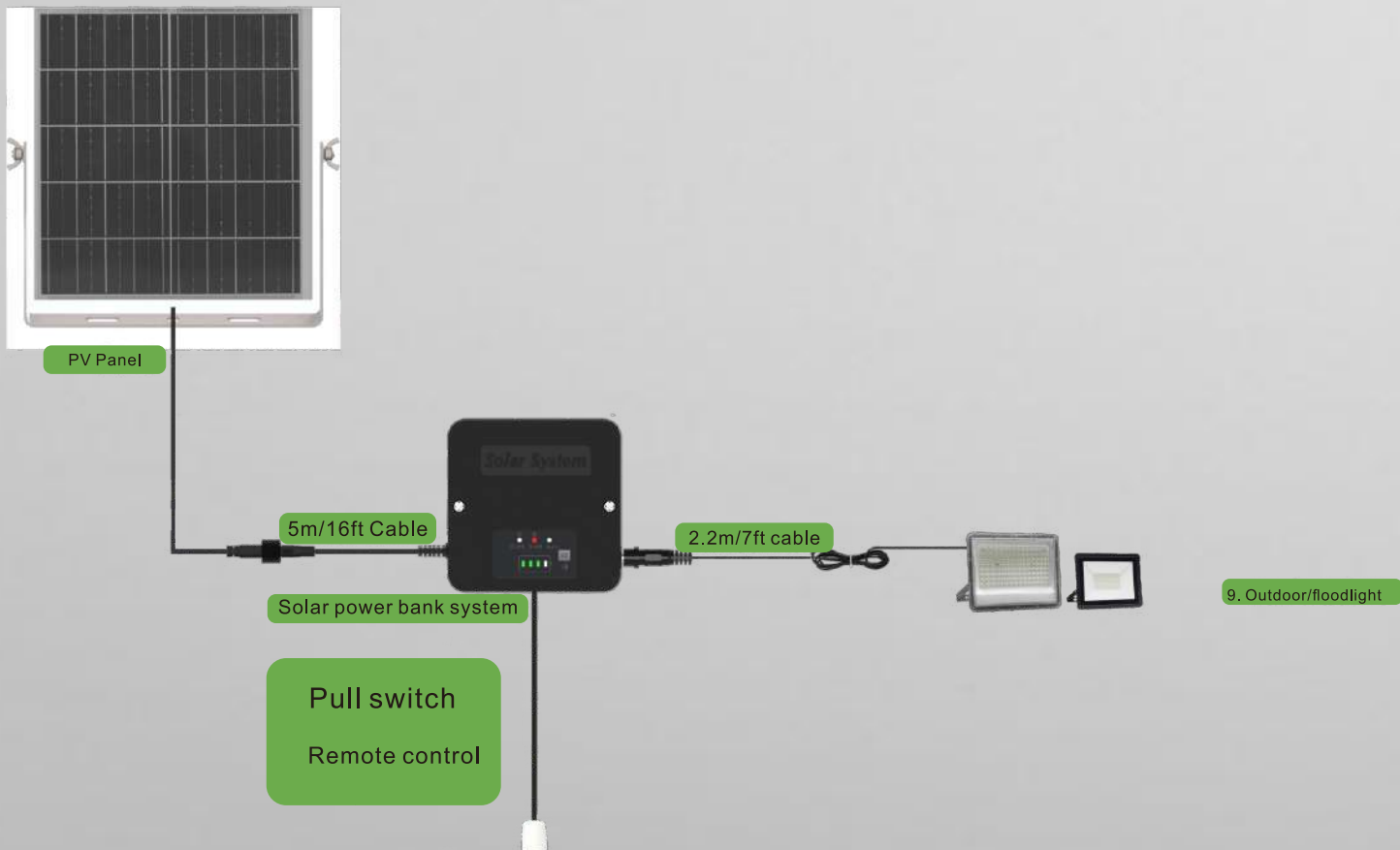
Remote control



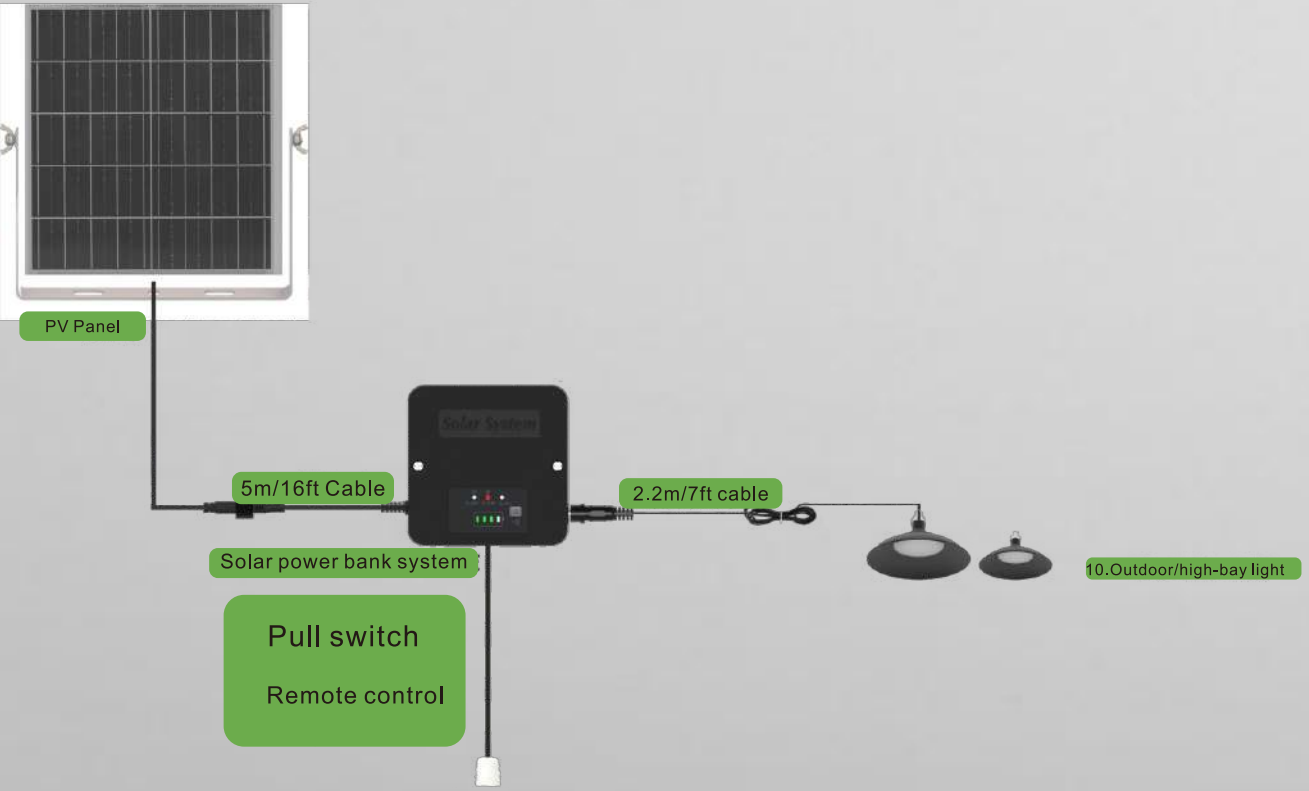
GIRASOLED



GIRASOLED



GIRASOLED



GIRASOLED



PV Panel

5m/16ft Cable

Solar power bank system

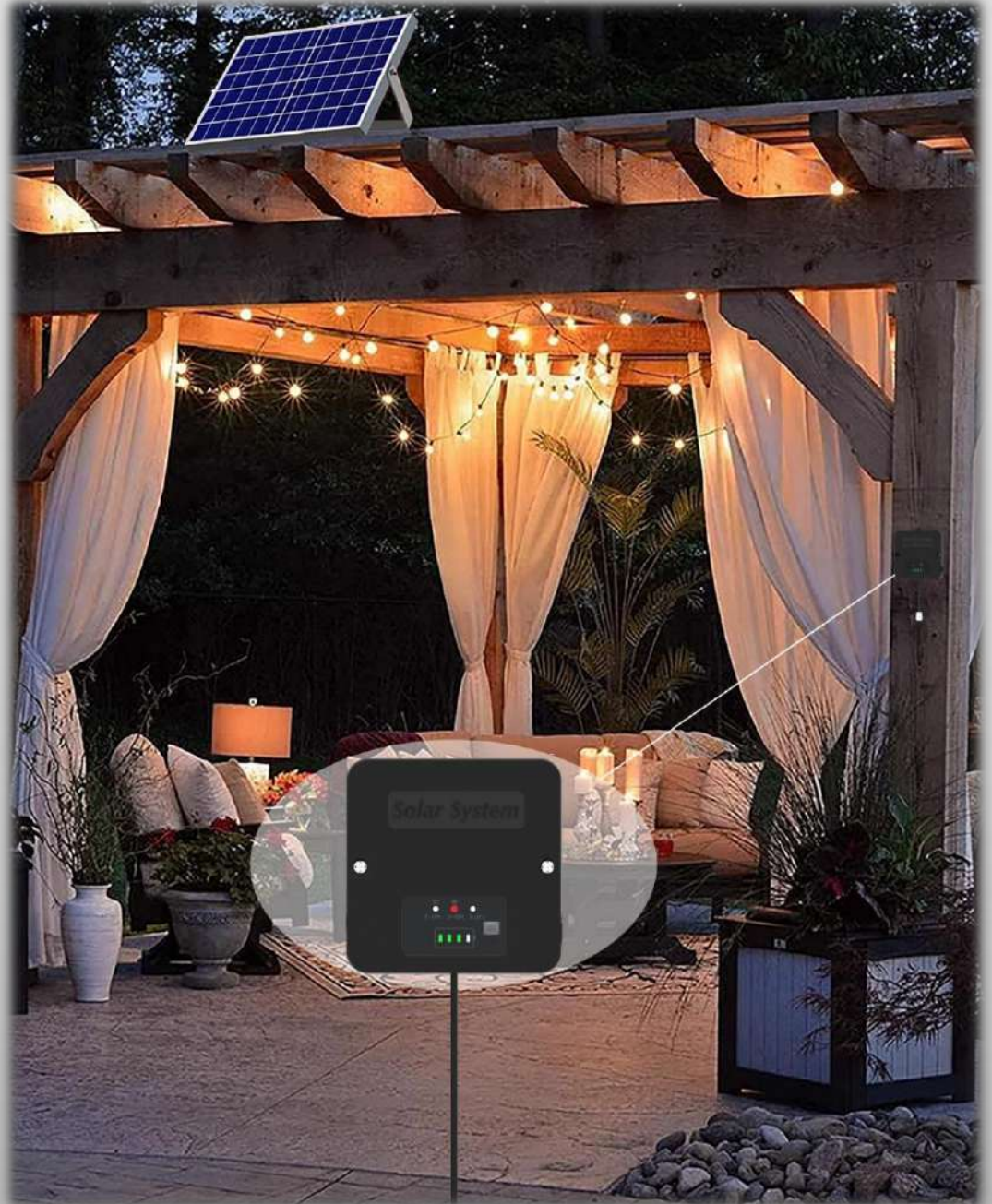
Pull switch

Remote control

2.2m/7ft cable



11. Outdoor/string lamps



GIRASOLED



PV Panel

5m/16ft Cable



Solar power bank system

2.2m/7ft cable



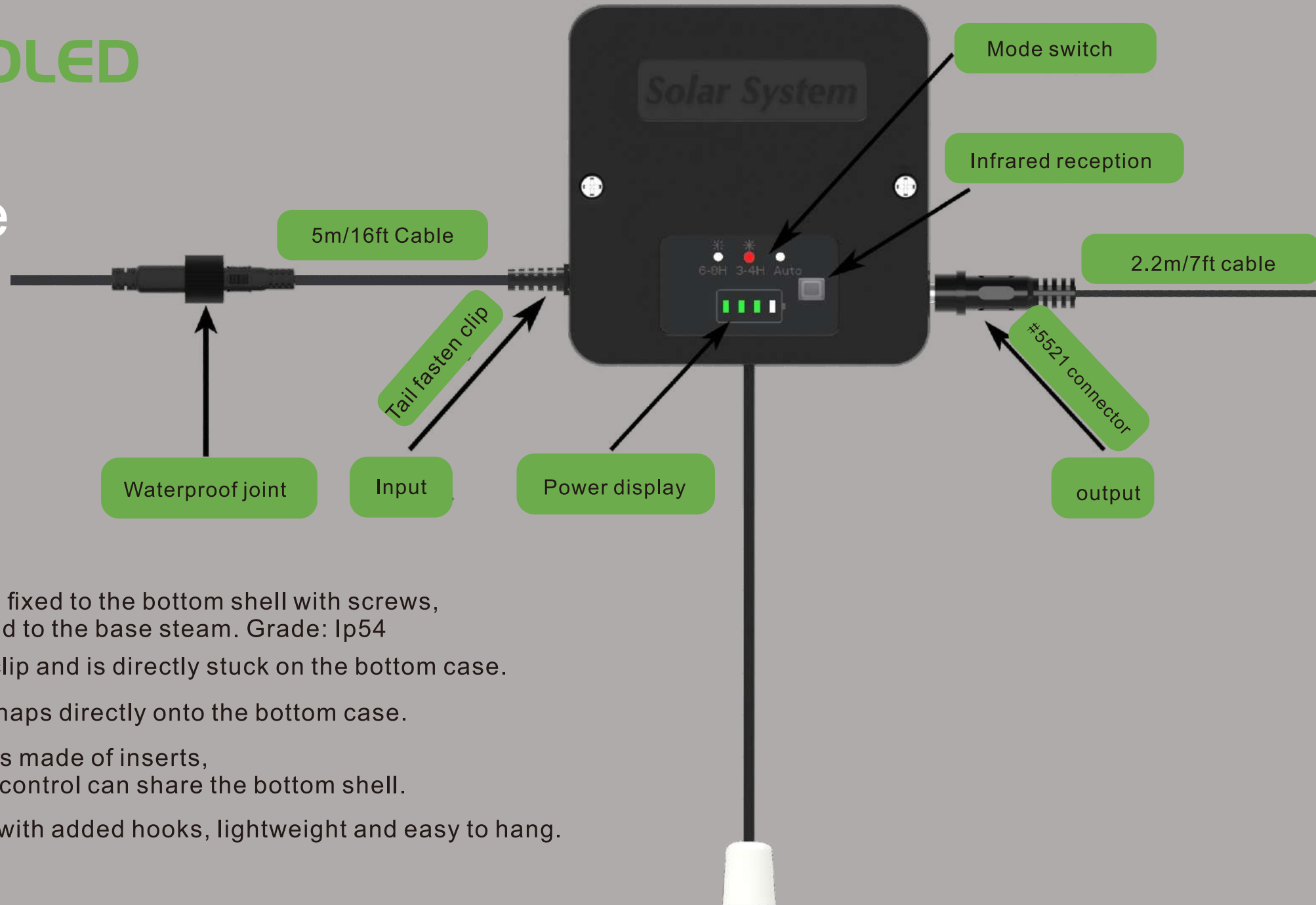
12.Outdoor/LED strip light

Pull switch

Remote control



Structure



1. The control panel is fixed to the bottom shell with screws, and the battery is glued to the base steam. Grade: Ip54
2. The wire has a tail clip and is directly stuck on the bottom case.
3. The bottom cover snaps directly onto the bottom case.
4. The cable position is made of inserts, and the cable/remote control can share the bottom shell.
5. Item No.1# is fitted with added hooks, lightweight and easy to hang.

Energy store box / power bank size

168X168X39mm



No.4

148X148X38mm



No.3

120X120X30.5mm



No.2

96X96X30.5mm



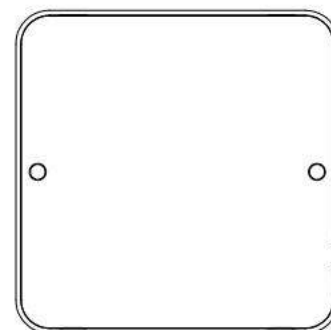
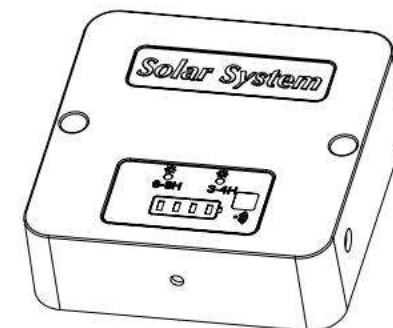
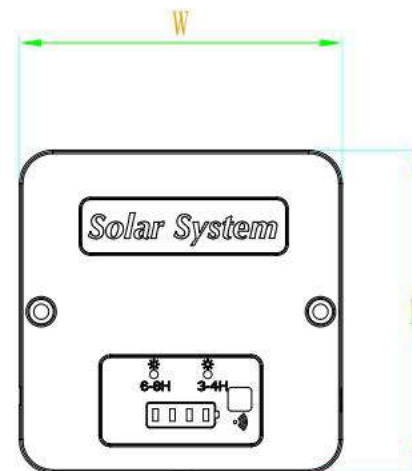
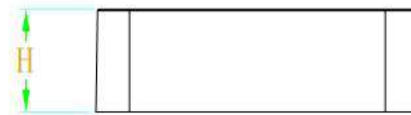
No.1

Solar energy storage lighting system

Tri-views of the power bank box

Product dimensions:

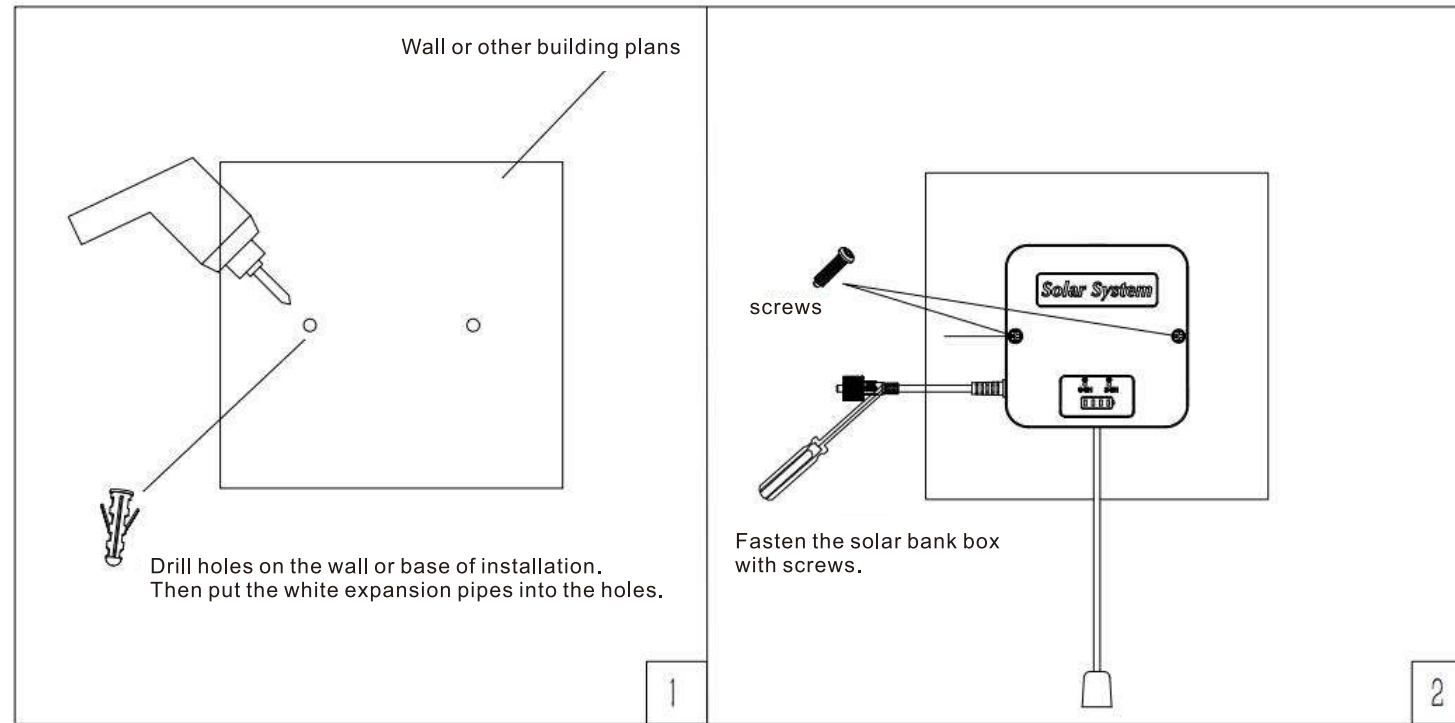
	No.1	No.2	No.3	No.4
L	96	120	148	168
W	96	120	148	168
H	30.5	30.5	38	39



Part.3

Product installation
and package
dimensions

Installation diagram:



① Use a pneumatic drill to make holes at the installation location (the hole spacing is based on the hole spacing of the actual energy storage box), plug the white expansion tube into the hole and tap it into place.

② Use a cross screwdriver to tighten the screws to fix the energy storage box.

THANKS

Let's look forward to what upgrades have been made
in the second generation!

